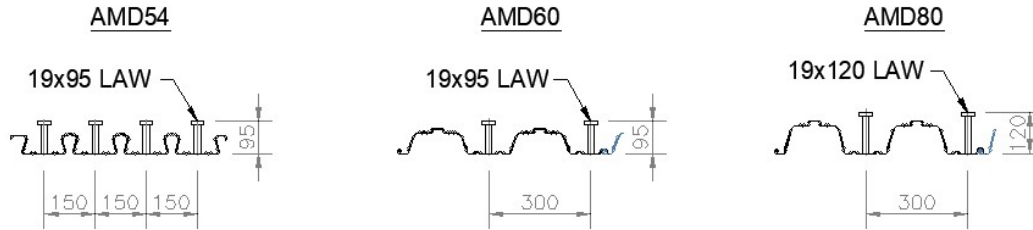
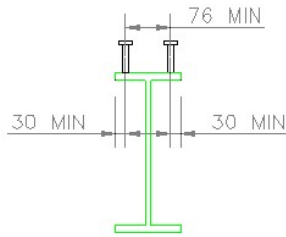


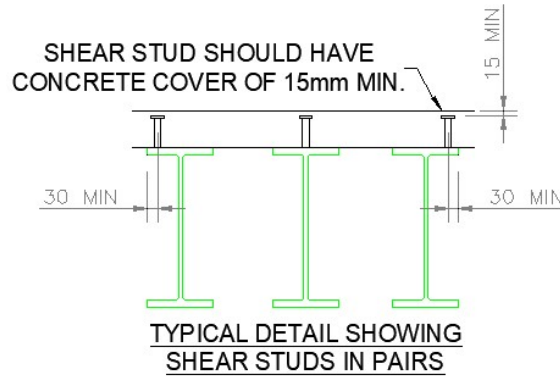
SHEAR STUD DETAILS



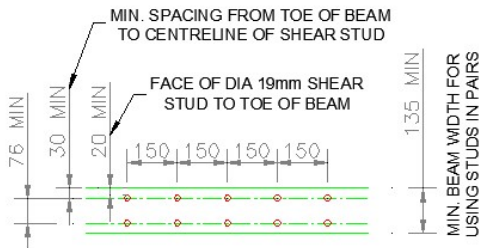
THE THICKNESS OF THE MATERIAL THAT YOU ARE WELDING TO MUST NOT BE LESS THAN 0.4 x STUD DIAMETER OR 7.6mm WHEN USING 19mm DIAMETER STUDS (0.4 x 19mm = 7.6mm)
THICKNESS OF MATERIAL ALLOWABLE FOR WELDING



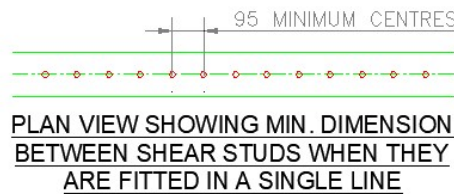
TYPICAL DETAIL SHOWING SHEAR STUDS IN PAIRS



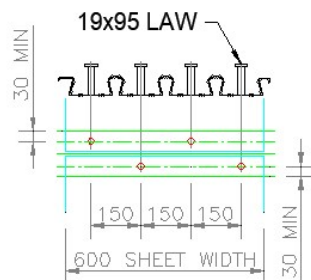
TYPICAL DETAIL SHOWING SHEAR STUDS IN PAIRS



PLAN VIEW ON BEAM WITH SHEAR STUDS IN PAIRS

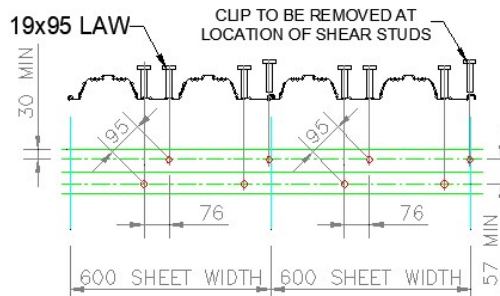


AMD54



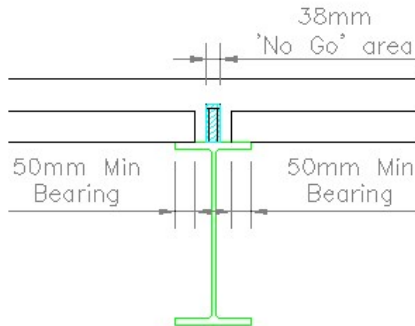
WHERE THE DECKING MEETS OVER A BEAM, SHEAR STUDS TO BE STAGGERED

AMD60 / AMD80

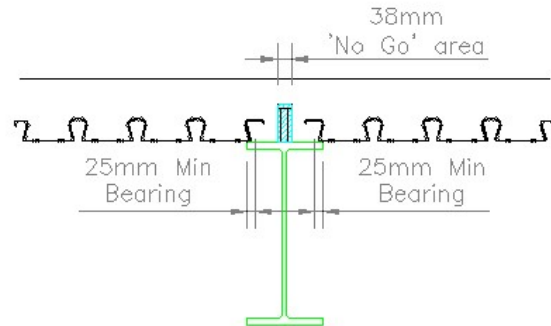


SHEAR STUDS IN PAIRS TO BE STAGGERED ON NARROW BEAM

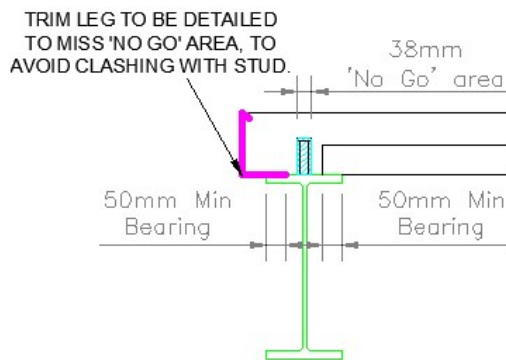
PRE-WELDED SHEAR STUD DETAILS



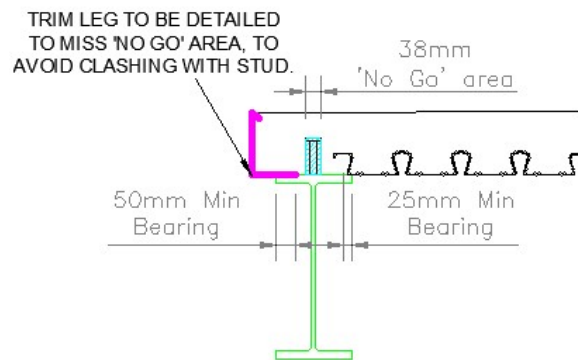
**PRE-WELDED SHEAR STUD
(19mm x 95mm)
END SECTION DETAIL**



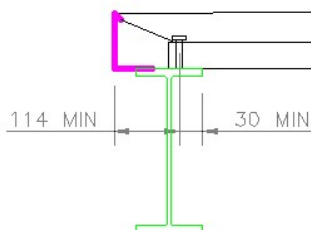
**PRE-WELDED SHEAR STUD
(19mm x 95mm)
SIDE SECTION DETAIL**



**PRE-WELDED SHEAR STUD
(19mm x 95mm)
END SECTION DETAIL**



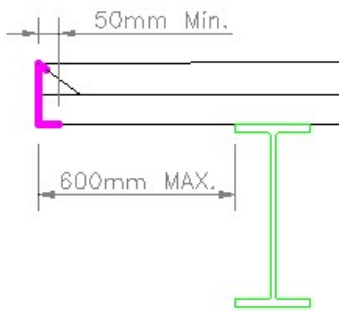
**PRE-WELDED SHEAR STUD
(19mm x 95mm)
SIDE SECTION DETAIL**



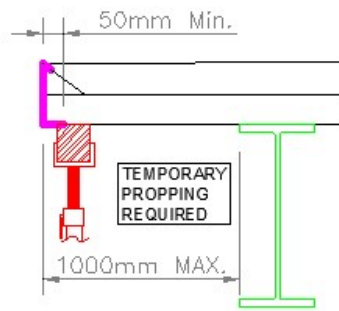
PLEASE NOTE THE MINIMUM SETTING OUT DIMENSIONS REQUIRED FOR THE SHEAR STUDS ON ALL COMPOSITE PERIMETER STEEL BEAMS AS INDICATED IN THIS TYPICAL SECTION DETAIL.

**TYPICAL PERIMETER STEEL &
SHEAR STUD SECTION DETAIL**

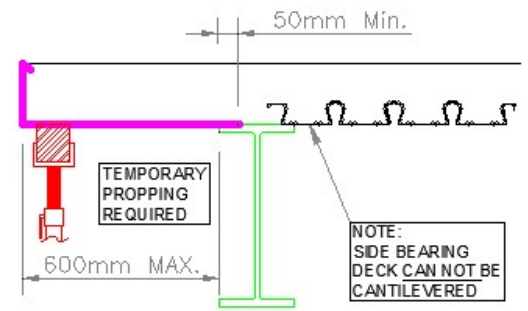
EDGE TRIM CANTILEVER DETAILS



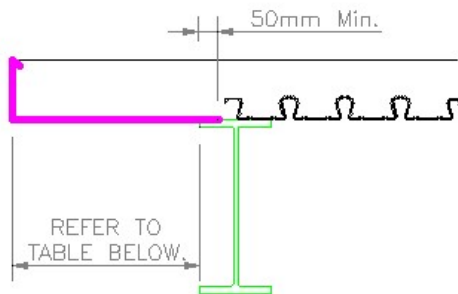
MAX. DECKING CANTILEVER



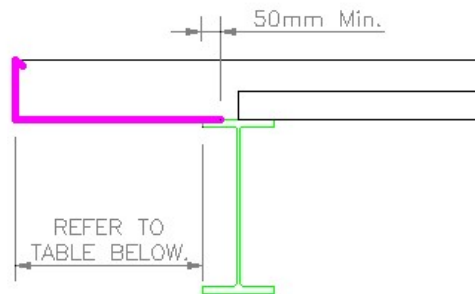
MAX. DECKING CANTILEVER
(WITH TEMPORARY
PROPPING)



MAX. EDGE TRIM CANTILEVER
(WITH TEMPORARY PROPPING)



MAX. EDGE TRIM CANTILEVER
(USING 2.0mm EDGE TRIM)



MAX. EDGE TRIM CANTILEVER
(USING 2.0mm EDGE TRIM)

Slab Depth (mm)	100	110	120	130	140	150	160	170	180	190	200
Max. Cantilever from Edge of Steel (mm)	210	205	200	195	190	185	180	175	170	165	160